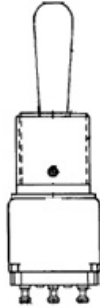




12TW1-1



Actual product appearance may vary.

TW Series Toggle Switch, 2 pole, 3 position, Solder terminal, Standard Lever, Military Part Number MS27719-21-1

Features

- Qualified to MIL-S-83731
- Save space and weight
- SPDT and DPDT circuitry
- Temperature range: -85°F to +160°F (-65°C to +71°C)
- Sealed bushing versions
- Choice of 1/8 in. or 15/32 in. bushing
- Color tab available on 15/32 in. bushing
- UL recognized

Potential Applications

- Industrial machinery and equipment
- Military and commercial aviation
- Construction equipment
- Test instruments
- Agricultural machinery
- Process control
- Medical instrumentation

Description

MICRO SWITCH™ miniature toggle switches in two bushing sizes. Molded-in terminals are plated for soldering. Momentary and maintained circuitry closures available. Special on-on-on circuitries are also available. Pull-to-unlock levers prevent accidental operation.

Product Specifications			
Circuitry/ Operating action	Keyway Position	Center Position	Opposite Keyway Position
	<p>1 2 3</p>	<p>1 2 3</p>	<p>1 2 3</p>
	<p>6 5 4</p> <p>ON</p>	<p>6 5 4</p> <p>OFF</p>	<p>6 5 4</p> <p>ON</p>
Product Type	MICRO SWITCH™ Toggle Switch		

Ampere/ Voltage Range (Resistive Load)	0.1 A to 5.0 A at 0.5 Vac to 115 Vac,0.1 A to 5.0 A at 0.5 Vdc to 28 Vdc
Circuitry	DPDT
Action	3 position
Mounting	Bushing 15/32 in
Termination	Solder
Military Part Number	MS27719-21-1
Lever Type	Standard
UL/CSA Rating Code	L117: 5 A at 125 Vac
Comment	Fine silver contacts
Availability	Global
UNSPSC Code	30211908
UNSPSC Commodity	30211908 Toggle switches
Series Name	TW

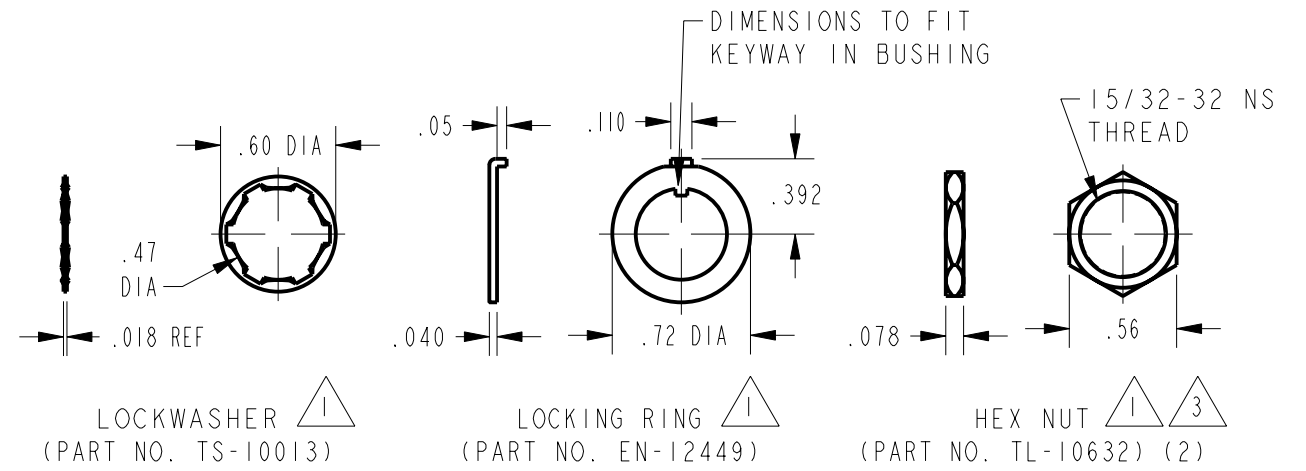
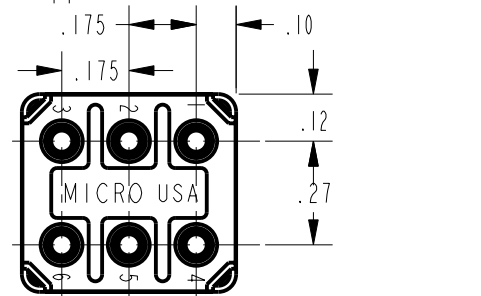
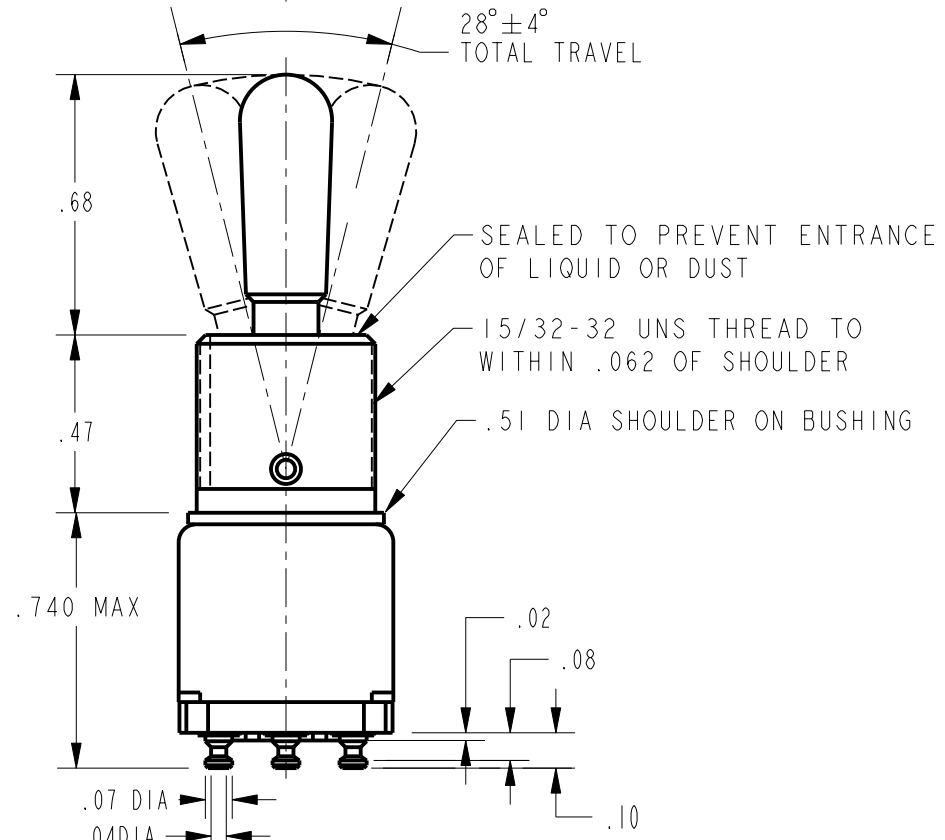
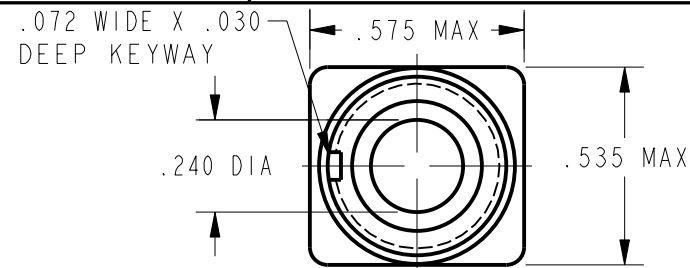
MICRO SWITCH
a Honeywell Division

FED. MFG. CODE 91929

SWITCH - TOGGLE

CATALOG LISTING

**12TW1 SERIES
CHART 1**



CATALOG LISTING	ONE EXTREME POSITION (KEYWAY)		CENTER POSITION		OTHER EXTREME POSITION (OPPOSITE KEYWAY)		MS NUMBER
	2-1	5-4	1-2	4-5	2-3	5-6	
12TW1-1	ON		OFF		ON		MS27719-21-1
12TW1-2	OFF		NONE		ON		MS27719-22-1
12TW1-3	ON		NONE		ON		MS27719-23-1
12TW1-5	MOM ON		OFF		ON		MS27719-31-1
12TW1-7	MOM ON		OFF		MOM ON		MS27719-27-1
12TW1-8	MOM ON		NONE		ON		MS27719-26-1
(D)	NONE		ON		ON		

NOTES
 1 - FURNISHED UNASSEMBLED
 2 - TERMINALS ARE PLATED FOR SOLDERING

CATALOG LISTING 12TW1 SERIES CHART 1

M 20

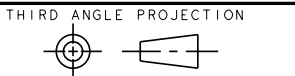
REVISIONS

A	CO 61252	MAM	18 MAR 87
B	CO62194	T S K	21 AUG 87
C	CO62939	T S K	24 FEB 88
D	CO-95308	LJK	10 NOV 99

DRAWN LJK 10NOV99

THIS DRAWING COVERS A PROPRIETARY ITEM AND IS THE PROPERTY OF MICRO SWITCH, A DIVISION OF HONEYWELL. THIS DRAWING IS NOT TO BE COPIED OR USED WITHOUT THE APPROVAL OF MICRO SWITCH

CHARACTERISTICS	ELECTRICAL DATA
	CONTACT ARRANGEMENT
	5A-125 VAC -L117-



SCALE	2 : 1
DO NOT SCALE PRINT	
UNLESS OTHERWISE SPECIFIED TOLERANCES ARE	
ONE PLACE	(.0) ±.030
TWO PLACE	(.00) ±.015
THREE PLACE	(.000) ±.005
ANGLES	±
WEIGHT	.025 LB MAX

ANSI Y14.5M-1982 APPLIES